



## City of Sonora

Community Development Department

94 N. Washington Street

Sonora, CA 95370

(209) 532-3508

(209) 532-3511 *fax*

[www.sonoraca.com](http://www.sonoraca.com)

### MEMORANDUM

**DATE:** June 18, 2018  
**TO:** Honorable Mayor and Council Members  
**FROM:** Rachelle Kellogg, Community Development Director  
**SUBJECT:** Stockton – Washington Corridor – Downtown Transit & Accessibility Improvement Project

---

---

#### RECOMMENDATION:

City staff recommends that the City Council approve the following:

- 1) Resolution No. 06-18-2018-B, awarding the engineering services contract for the Stockton – Washington Corridor – Downtown Transit & Accessibility Improvement Project to Kimley-Horn and Associates, Inc. and authorizing the City Administrator to execute all agreements and documents related to the project.

#### BACKGROUND:

The City issued the first Request for Proposal (RFP) for the project's design engineering services on August 7, 2017. The scope of services under this RFP included engineering, field survey work, landscape and electrical design services, public outreach and environmental services/clearance to result in contract documents (plans, specifications and cost estimated) for the project and the appropriate environmental document to comply with NEPA and CEQA. The submittal deadline for proposals was September 11, 2017 and the City received one proposal from Kimley-Horn and Associates, Inc.

Following discussions with Caltrans regarding the justification requirements for sole source approval and discussions with Kimley-Horn related to their cost proposal, the City made a determination to re-advertise the contract in an attempt to receive additional proposals. On February 16, 2018, the City issued a new Request for Proposal for design engineering services with a proposal submittal deadline of March 19, 2018. The scope of services was revised to remove project environmental services/clearances and the associated studies, which will now be completed by the City's Contract Planner, Paula Daneluk, and funded through the TCTC. The City also revised the scope of services to more clearly define specific items within the RFP.

Both RFPs were sent directly, by email, to 64 firms and to two consultant network service providers who provided the information to their consultant network. The RFP's Notice of Availability was published/posted in the Union Democrat, The Record, Modesto Bee, City's website, and at City Hall. As with the first RFP, the City received only one proposal again from the firm Kimley-Horn and Associates, Inc.

**DISCUSSION:**

Kimley-Horn's proposal was evaluated and scored by Tim Miller, Darin Grossi and Rachelle Kellogg, Consultant Selection Committee, evaluating the consultant's understanding of the project scope of work, similar work experience, assigned staff qualifications, familiarity with federal and state requirements, financial responsibility, and technical ability. The Consultant Selection Committee also reviewed the consultant's cost proposal. The Committee met with John Pulliam and Daniel Carley with Kimley-Horn to discuss the project scope and schedule and to negotiate project costs. The Committee determined that they are qualified to perform the services required and that the assigned staff is fully aware of all applicable federal and state laws, regulations, design standards and specifications that are required to complete the project. Staff submitted, to Caltrans, the request for sole source and indirect cost rate approval. Both were approved and the City is now in a position to move forward with the award. Engineering services must be fully completed on or before April 1, 2019.

# **Resolution Number: 06-18-2018-B**

## **A RESOLUTION OF THE CITY COUNCIL AWARDING THE ENGINEERING SERVICES CONTRACT FOR THE STOCKTON – WASHINGTON CORRIDOR – DOWNTOWN TRANSIT & ACCESSIBILITY IMPROVEMENT PROJECT TO KIMLEY-HORN AND ASSOCIATES, INC. AND AUTHORIZING THE CITY ADMINISTRATOR TO EXECUTE ALL AGREEMENTS AND DOCUMENTS RELATED TO THE PROJECT**

WHEREAS, the City of Sonora is a recipient of federal funding under the Federal Highway Administration (FHWA) for the Stockton – Washington Corridor – Downtown Transit & Accessibility Improvement Project; and

WHEREAS, the City has issued a Request for Proposal (RFP) for project engineering services and received one proposal from Kimley-Horn and Associates, Inc.; and

WHEREAS, the proposal has been evaluated by the Consultant Review Committee who has determined that the consultant is qualified to perform the services required and that the assigned staff is fully aware of all applicable federal and state laws, regulations, design standards and specifications that are required to complete the project; and

WHEREAS, the Consultant Review Committee has also reviewed the consultant’s cost proposals and has completed negotiations; and

WHEREAS, the City has complied with all of the A&E procurement requirements included within Chapter 10 of the Caltrans’ Local Assistance Procedural Manual;

NOW, THEREFORE, BE IT RESOLVED THAT THE SONORA CITY COUNCIL HEREBY awards the engineering services contract for the Stockton – Washington Corridor – Downtown Transit & Accessibility Improvement Project to Kimley-Horn and Associates, Inc. and authorizes the City Administrator to execute all agreements and documents related to the project.

PASSED, APPROVED AND ADOPTED as a Resolution by the Sonora City Council at a meeting held by the City Council on the 18th day of June 2018, by the following vote:

AYES: \_\_\_\_\_

\_\_\_\_\_

NOES: \_\_\_\_\_

ABSENT: \_\_\_\_\_

Dated: June 18, 2018

\_\_\_\_\_  
Connie L. Williams, Mayor

ATTEST: \_\_\_\_\_  
Marijane Cassinetto, City Clerk

## **Scope of Services – Contract Final**

We have reviewed and based our proposed scope off of the scope provided in the RFP. We have augmented and expanded in those areas based on our project understanding.

The City has identified the following milestones:

- Milestone 1 – Completion of the City's selection of the preferred alternative
- Milestone 2 – Completion of the preliminary base plans (35%) for the project design
- Milestone 3 – 90% PS&E
- Milestone 4 – Completion of PS&E
- Milestone 5 – Completion of the Construction Bid Documents and Caltrans Authorization for Construction

The Kimley-Horn team's proposed Scope of Services includes the following key tasks:

1. Project Management and Coordination
2. Data Gathering
3. Alternatives Development and Public Outreach
4. Preliminary Engineering
5. Final PS&E

### ***Task 1. Project Management and Coordination***

Kimley-Horn assumes the management activities will last up to 7 months, ending on January 31, 2018. We understand the City desires to have PS&E completed by January 31, 2018, and our team will endeavor to meet that deadline. However there are numerous critical-path items that are not within our control, including reviews and actions by the City and Caltrans.

This task covers project management, attendance at project meetings, Caltrans coordination, and performance of quality control. It does not include project management services through construction. The management activities are as outlined in the following sub-task descriptions:

#### *Sub-Task—Project Administration*

Kimley-Horn staff's administration efforts include initial development and maintenance of project schedule (Critical Path Method or equal), work plan, and processing timely invoices.

#### *DELIVERABLES:*

- *Electronic copy of Project Schedule and Monthly Invoices*
- *Internal Project Files and Work Plan (retained at Kimley-Horn offices for up to 3 years)*
- *File correspondence, emails, and memos*

#### *Sub-Task—Meetings*

Kimley-Horn will participate in monthly design coordination meetings. We assume the majority of these will be handled via conference call, with a total of five (5) in-person meetings, including the Kick-off meeting. Ahead of these meetings, we will develop short bullet-point agendas. In-person meetings will be held at the City offices.

We will take and distribute draft meeting minutes after each meeting for the City's review and comment/approval. City comments will be incorporated and final meeting minutes will be distributed to the City.

#### *DELIVERABLE:*

- *Meeting agendas*
- *Electronic copy of meeting minutes (draft and final) Attendance at up to five (5) project meetings at the City*

#### *Sub-Task—Coordination*

Kimley-Horn will coordinate with project stakeholders, including:

- Local businesses
- Tuolumne County
- Yosemite Area Regional Transportation System (YARTS)
- Sonora Trolley Bus Service

We assume these meetings will take place on the same days as we have in-person meetings with the City. We will take and distribute meeting minutes after each meeting. We have assumed a maximum of 40 hours for coordination efforts in this task.

We assume that the City will take the lead on the coordination with the City Council, Public Work Commission, and Design Review Board, and that the City will be an active and involved partner in all meetings with external stakeholders.

**DELIVERABLE:**

- *Electronic copy of meeting minutes*

**Sub-Task—Caltrans Coordination**

Kimley-Horn will coordinate directly with Caltrans upon NTP from the City. We will submit an encroachment permit for field reconnaissance, and we will set up a pre-design encroachment permit meeting to introduce the Project to Caltrans and look to gain informal input on the project improvements.

This task includes coordination with the Encroachment Permit Department (during the encroachment permit process) and the District Local Assistance Engineer (during the Request for Authorization process). This task includes preparation of the necessary forms and communication in pursuit of the encroachment permit and project funding authorization. We have assumed a maximum of 40 hours for coordination efforts in this task.

**DELIVERABLE:**

- *Electronic copy of meeting minutes*
- *Submittals to Caltrans for Encroachment Permit Application and Funding Request for Authorization Documents*

**Sub-Task—Quality Control**

Kimley-Horn follows a structured QC/QA process that will be implemented throughout the life of the project. Senior staff will perform independent reviews ahead of major report and plan submittals (35%, 90%, and Final) to confirm the quality of our deliverables. We have assigned Kimley-Horn staff that possesses constructability experience to define construction staging/phasing.

**DELIVERABLE:**

- *QC/QA check prints (retained at Kimley-Horn offices for up to 3 years)*

## **Task 2. Data Gathering**

**Sub-Task—Field Work, Research, and Gather Existing Information**

This task includes data gathering and field visits to support preliminary engineering and final design, geotechnical analysis, traffic engineering, drainage analysis, determination and preparation of right-of-way information, and utility coordination. We assume two (2) field visits for this task.

**Sub-Task—Surveying Services (Field Topographic Survey, Boundary Survey, Base Map)**

Our subconsultant California Construction Surveying, Inc. (CCS) will provide surveying services. CCS will conduct a topographic field survey of the existing features within the project area, including surface utility facilities and storm drain and sewer structure inverts, and prepare an existing features AutoCAD file that will include linework of the existing features and an existing ground surface. CCS will also perform right of way research, identify found property corners, and provide resolved boundary right-of-way information.

CCS will prepare an existing ground surface model from the survey with smooth contours and resolved triangulation. Developing Temporary Construction Easements (TCE), Right of Entry (ROE), or other right of way documents are not included in this task, but can be provided for additional fee.

*DELIVERABLES:*

- *AutoCAD topographic base file*
- *Existing ground surface*
- *Right-of-Way information in AutoCAD*

*Sub-Task—Geotechnical Evaluation and Report*

*Field Investigation*

Our subconsultant WRECO will conduct a field investigation for the proposed pavement sections and any underground utility relocation required for the Project. The following work will be performed:

- *Pay all fees and fill out a Caltrans Encroachment Permit for the drilling work within Caltrans right-of-way.*
- *Mark out the borings in white paint and call in USA North Utility Notification a minimum of 72 hours before the start of the field work.*
- *With traffic control in place, drill two soil borings using solid flight augers to completion depths of 10 feet below current grades. Because these are less than 15 feet deep, no boring permit from Tuolumne County is required. The existing asphalt concrete (AC) and any identified base material will be measured where penetrated with borings. All borings will be backfilled with lean cement, and the soil cuttings drummed and disposed of off-site. All penetrations in the asphalt within Caltrans right-of-way will be patched with SET45 dyed black and in the City's right-of-way with a minimum of 3 inches of permanent cold asphalt concrete.*
- *Sampling will be performed using driven split barrel samplers following the Standard Penetration Test (ASTM D1586). Bulk samples will be retrieved from the auger cuttings as the drilling advances.*
- *Recovered representative samples will be visually classified and tested to better determine the engineering characteristics of the soils. At this time the testing is anticipated to consist of Atterberg Limits, gradation, R-value, and optimum moisture content/maximum dry density (Modified Proctor). The actual test schedule will be prepared after the samples are collected.*

*Geotechnical Engineering Study*

Our subconsultant WRECO will prepare and perform a field investigation consisting of soil borings and test pits, as best determined by the final alignments and proposed construction requirements, to better define the subsurface conditions along the Project alignment. Recovered representative soil samples will be tested to determine the soil index properties, strength properties, and subgrade modulus for pavement design and any new or relocated underground utilities. Actual testing will be determined based upon the required demands and actual soil and rock samples recovered.

WRECO will prepare a Geotechnical Engineering Study, which will include a summary of the field investigation, laboratory testing, and design recommendations for the proposed Project. The study will provide the following information:

- *A discussion of the scope of work performed.*
- *A summary of the field investigation performed.*
- *A summary of the laboratory testing performed.*
- *A discussion of the idealized soil and rock profiles along the Project with engineering soil parameters.*

- *Recommendations for reuse and/or rehabilitation of the existing pavements along with new hot mix asphalt pavement sections.*
- *Recommendations for any subgrade special preparation prior to new structural pavement section placement.*
- *Recommendations for trench excavation, trench shoring, and trench backfill.*
- *Recommendations for reuse of excavated materials.*
- *Recommendations for new concrete flatwork.*
- *Other recommendations with respect to site grading, disposal of excavated materials, and other construction recommendations.*

WRECO will prepare the Draft Geotechnical Engineering Study, which will be submitted to the Project Team and City for review and comment. Upon receipt of all report comments and any revised plans, WRECO will submit the Final Geotechnical Engineering Study to be included in the construction documents.

☐ **Task 2 Deliverables:**

- *Draft Geotechnical Engineering Study (PDF)*
- *Final Geotechnical Engineering Study (PDF and 2 hard copies)*

*Sub-Task Drainage Report and Stormwater Data Report*

Kimley-Horn will review the available data and prepare design calculations to assess the capacity of the existing drainage systems. We will prepare the Drainage Report, which will include design calculations to assess the need for drainage improvements. The results and design recommendations will be summarized in the Drainage Report. The report is expected to include the following:

- Evaluation of the existing conditions
- Unusual and special conditions
- Drainage mapping
- Hydraulic analysis
- Proposed systems

*Stormwater Data Report*

Kimley-Horn will prepare a Stormwater Data Report summarizing the Project impacts to water quality and recommended best management practices (BMPs). We will perform detailed calculations to support design and details of the water pollution control measures, low impact design features, and treatment BMPs as applicable.

**DELIVERABLES:**

- *Drainage Report*
- *Stormwater Data Report (SWDR)*

*Sub-Task—Traffic Analysis and Summary Memorandum*

We will conduct traffic counts (7-9am, noon-6pm WEEKDAY (Tues, Wed, Thurs), as well as classification counts (trucks, cars, bikes, and pedestrians) at the Stockton St. (SR-49) and Washington St. intersection.

We will prepare a traffic memorandum based on the updated counts and previously-conducted traffic analysis from the Vision Sonora Plan. This memorandum will be used to support the project to Caltrans and will be submitted with the encroachment permit application package.

**DELIVERABLES:**

- *Traffic Memorandum*

#### *Sub-Task—Utility Coordination*

Record base maps of the utility companies will be requested and we will notify the various agencies and request that if they plan to install new facilities within the project area that they coordinate with the City as soon as possible. We will incorporate the above ground and approximate underground facilities into our mapping.

Kimley-Horn will review record plans received from utilities and analyze utility data captured by the topographic surveys, to identify potential utility companies and conflicts with the proposed improvements, as well as identify high priority facilities as defined by Caltrans. We will create utility impacts exhibits, which identify areas of potential utility conflict or high priority facilities. We will work with identified utility companies and with the City to determine a strategy for dealing with utility conflicts, including adjustments, relocations, and protection in place, as required by the Local Assistance Procedures Manual (LAPM). We will prepare Notice to Owner letters, as needed, to comply with Caltrans utility relocation procedures for adjusting existing facilities to grade. We do not anticipate any utility relocations, only surface facility adjustments.

Depending on the existing facilities within the project area, potholing may be required to determine exact locations of crossing utility conflicts or high priority facilities (requirement by Caltrans Utility Certification and Right-of-Way Certification Exhibit 13-A when high priority facilities are present). Due to the uncertainty of needing potholing, this is not included in our scope or fee.

#### *DELIVERABLES:*

- *Documentation of Utility Coordination*

### ***Task 3. Alternative Development and Public Outreach***

#### *Sub-Task—Develop Concepts*

Kimley-Horn will build upon the concept developed as part of the Vision Sonora Plan, and create up to two (2) alternatives for improvements within the project limits. We assume one alternative will show concept improvements to Washington Street, and the other show concept improvements to Stockton Street. Both concepts will include modifications to the existing signalized intersection. These alternatives may also include options for landscape plant palette, hardscape materials, colors and textures, gateway feature variations, pedestrian and transit facilities and locations, and parking configurations.

We will provide landscape, hardscape, transit shelter, and gateway feature options, with the focus being enhancing the natural scenic beauty of the City of Sonora. Special effort will be made to use native plant selections that are appropriate to the project to represent an enduring, low water use and low maintenance landscape that respects the community and setting that surrounds the project. Hardscape materials will be selected to mimic and complement the local environment, also considering long-term maintenance.

This task includes preparing base sheets, and conceptual landscape and hardscape alternatives which can be used to collect public input. This task assumes one (1) round of non-conflicting comments will be addressed to produce the 35% design. Kimley-Horn will work with the City to identify the City's preferred alternative that will be presented at the public outreach meeting.

#### *DELIVERABLES:*

- *Concept design exhibits for up to two (2) alternatives*

#### *Sub-Task—Develop Concept Opinions of Probable Construction Cost Estimates*

Kimley-Horn will prepare a concept-level engineer's opinion of probable construction cost (OPCC) for each of the two alternatives.

#### *DELIVERABLES:*

- *Conceptual Opinions of probable construction cost estimates for up to two (2) alternatives*



#### *Sub-Task—Public Outreach and Council Meeting*

Kimley-Horn will prepare materials and facilitate up to two (2) public outreach meetings: the first to present the City's selected preferred alternative, and the second to present the preliminary engineering design of the selected alternative in support of the environmental clearance process (by others). We will also present the final design plans for the selected alternative at a City Council meeting. We can prepare graphics, renderings, mailings, and PowerPoint slides to support the meetings. Our fee includes a total of 60 hours to prepare materials for the meetings. We assume that the City will be responsible for assembling the mailing list and mailing meeting notices, and providing/reserving the location for the meetings.

#### *DELIVERABLES:*

- *Electronic copy of meeting minutes*
- *Attendance and participation in up to two (2) public meetings*
- *Attendance and presentation at a City Council meeting*
- *Public Meeting Materials Preparation (up to 20 hours of time)*

#### **Task 4. Preliminary Engineering**

##### *Sub-Task—Preliminary Engineering (35% PS&E)*

Kimley-Horn will develop preliminary engineering 35% plans and engineer's opinion of probable construction cost for the selected alternative to be used in support of the CEQA and NEPA approvals (being done by others). Developing project technical specifications are not included in this task.

#### *DELIVERABLES:*

- *Preliminary Engineering (35% plans and OPCC)*

#### **Task 5. Final PS&E**

The scope of services for this task consists of creating two PS&E deliverables: 90% and Final. Kimley-Horn will advance the preliminary engineering design (35%) from Task 4 to 90% design level. Kimley-Horn will provide the City with a set of draft project specifications that will address issues such as materials specification, testing requirements, and how each item will be measured and paid for. Kimley-Horn expects that the City will provide a City specification standard boilerplate that consist of the front-end portion of the project specifications. We will review the front-end boiler plate and update it to be in compliance with State and Federal requirements. Kimley-Horn will create the technical specifications based on Caltrans 2015 format and Standard Specifications.

We anticipate submitting the 90% PS&E package to Caltrans for review with the required documentation for the encroachment permit. We assume no design exceptions will be required for the design of the proposed improvements. Should design exceptions be unavoidable, Fact Sheets to Design Exceptions documents will need to be prepared and submitted to Caltrans; this work can be done for additional fee. We assume Caltrans will provide one set of non-conflicting comments that we will address during the Final PS&E subtask.

We anticipate the following documents to be submitted to Caltrans with the Encroachment Permit Application:

- Encroachment Permit Application
- Draft Permit Engineering Evaluation Report (PEER - 1 page)
- Authorized Agent Letter signed by the City of Sonora
- 90% PS&E
- Copy of NOE stamped "RECEIVED" by the County (by Others)
- Storm Water Data Report
- Electronic copies (PDF) of environmental documents and supporting technical documents (by Others)
- Right of Way Certification
- Utility Certification
- Transmittal Letter

<b>SHEET TYPE</b>	<b># OF SHEETS</b>
Title Sheet	1
General Notes, Legend, Abbreviations	1
Typical Cross Sections	1
Key Map/Hoz Control	1
Demolition Sheets	1
Roadway Plan and Profile	1
Intersection Plan	1
Construction Details	4
Transit Stop Details	1
Foundation Details	1
Utility Plans and Details	1
Temporary Water Pollution Control	1
Traffic Handling/Construction Staging	3
Construction Area Signs	1
Signage and Striping Plans and Details	2
Drainage Plans and profile	2
Drainage Details	1
Urban Design Cover, Landscape Qtys, and Details	2
Urban Design/Landscape Plans	1
Urban Design/Landscape Details	2
Irrigation Plans	1
Irrigation Details	2
Retaining Wall arch and structural design	2
Signal Plans (1 signals)	2
Lighting and Electrical Plans and Details	3
<b>TOTAL</b>	<b>39</b>

*Sub-Task—90% Roadway Design*

90% roadway design plans including title sheet, horizontal control, key map, plan and profiles, typical cross-sections and construction details will be updated and refined from the preliminary engineering (35% plans). We will prepare signing and pavement delineation plans. Plans will be prepared based on Caltrans standard pavement delineation details and signing will be based on the Manual of Uniform Traffic Control Devices—California Edition, modified as required per current published City standards.

Kimley-Horn will prepare Stage Construction, Traffic Handling, and Detour plans required for any long-term lane closures and any detours. The plans will be based on the Manual of Uniform Traffic Control Devices – California Edition and Caltrans Traffic Manual, modified as required per current published City requirements.

*Sub-Task—90% Signal, Lighting, and Electrical Plans*

Kimley-Horn will prepare 90% traffic signal, street lighting, and associated electrical plans. Traffic Signal design at the Stockton/Washington intersection will utilize the Caltrans 2015 Standard Plans and Standard Specifications. We will prepare electrical plans for the proposed lighting, security cameras, and electrical service stub out for the future NextBus signage.

Street Lights will utilize the Caltrans 2015 Standard Plans and Standard Specifications, modified as required per current published City requirements.

Our design will account for providing the necessary power to the security cameras and shelter. This scope does not include camera selection, fiber optic or communication design, or the back-end system design and integration. If these services are requested, they can be provided for an additional fee.

*Sub-Task—90% Drainage Design*

We will prepare the 90% Drainage Plans/Profiles and Detail sheets, including any Low Impact Development (LID) features. The design efforts will be coordinated with other design disciplines of the Project Team.

As part of the drainage and stormwater design, our team will include LID and new structural features (bio-retention, extended detention/retention/landscape planters) to improve the quality of the runoff leaving the site while also maintaining the existing hydrology of the project site.

Our scope assumes that the Contractor will be required to prepare the SWPPP. We will prepare specifications to require the appropriate level of water pollution control. We can create the project SWPPP for an additional fee.

*Sub-Task—90% Transit, Landscaping, and Irrigation Design*

Kimley-Horn will prepare urban design plans which contain both landscape and hardscape elements. Landscape improvements will include low-water use and low maintenance landscape zones in planter areas within the project area. The landscape zones are anticipated to be a combination of trees, shrubs, vegetative groundcovers and mulch. Proposed palettes will be compliant with local codes and the State of California's Model Water Efficient Landscape Ordinance. Hardscape improvements will identify colors, materials and textures of any specialty paving areas, signage and/or shade structures. Plans will include layout location and information. Irrigation Plans will be prepared for each planting area shown. The design of the system will utilize potable water source(s). Plans will consist of the diagrammatic layout/location of irrigation equipment and a materials schedule indicating type, quantity and associated water use calculations per the State's Water Efficient Ordinance. In addition, supporting specifications and opinions of supporting specifications and OPCC will be provided. Plans will be developed in Caltrans format utilizing QC/QA.

We will assist and guide the City through a process to select an off-the-shelf transit shelter. We will provide structural plans and details for the shelter foundation. We assume the same shelter design will be installed at both proposed transit shelter locations.

Kimley-Horn will coordinate with water agency for new water service locations, and prepare applications. Our scope does not include any payment of fees for water service applications or new service. We assume City will pay all necessary fees.

*Sub-Task—90% Specifications*

Project Specifications will be prepared and added to the construction contract documents. The base document that the specifications will be based on is the Caltrans 2015 Standard Specifications. The project special provisions will use common language format with reliance on Caltrans Section 9 standard measurement and payment clause for consistency with the 2015 Standard Specifications. This task includes creation of the special provisions.

Working days will be estimated as part of this task. A CPM schedule will be created and provided to the City for review and comment. Kimley-Horn will review and revise the City-provided front-end specification to incorporate the latest federal and state requirements.

*Sub-Task—90% Opinion of Probable Construction Costs*

The engineer's opinion of probable construction costs will be created based on the 90% plans. The estimate will include a percentage of contingency to assist in accounting for potential changes between

the 90% plan submittal and project award, and bid items will be named using Caltrans standard bid item names.

*SUMMARY OF 90% DELIVERABLES:*

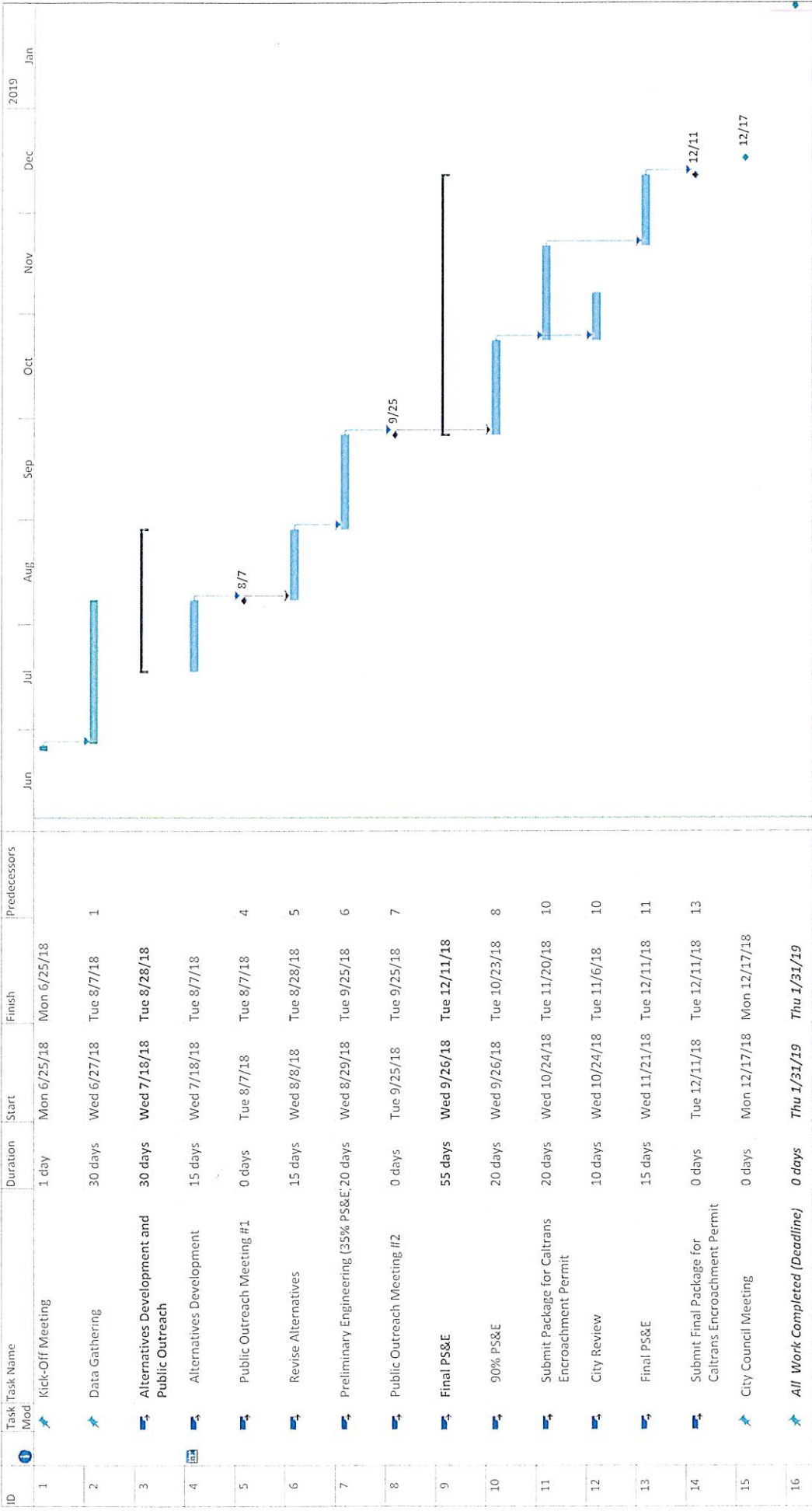
- *Three (3) half-size hard copies of 90% PS&E*
- *Six (6) full-size hard copies Final PS&E to Caltrans*
- *Encroachment Permit Application and PS&E Package Submitted to Caltrans*
- *Electronic versions of plans (PDF), specifications (Word), and OPCC (Excel)*
- *Draft Caltrans Encroachment Permit Application - City as Applicant*

*Sub-Tasks—Final PS&E Design Tasks (multiple)*

The Final design tasks include the preparation of the Final design (plans, specifications and estimate) for the Project. Kimley-Horn will coordinate the resolution of outstanding design issues and respond to one set of non-conflicting consolidated comments from the City and from Caltrans received on the 90% PS&E and submitting encroachment permit documents. We will submit the Final PS&E package to Caltrans for approval with the required revised documentation for the encroachment permit. We assume no design exceptions will be required for the design of the proposed improvements. Should design exceptions be unavoidable, Fact Sheets to Design Exceptions documents will need to be prepared and submitted to Caltrans; this work can be done for additional fee.

*SUMMARY OF FINAL DELIVERABLES:*

- *Three (3) full-size hard copies of Final PS&E to City of Sonora*
- *One (1) half-size hard copies of Final PS&E to City of Sonora*
- *Six (6) full-size hard copies Final PS&E to Caltrans*
- *Electronic versions of plans (PDF), specifications (Word), and Cost Estimate (Excel)*
- *Revised Encroachment Permit Application and PS&E Package Submitted to Caltrans*
- *Revised PS&E Package Submitted to Caltrans with Response to Caltrans Comments Matrix*



Project: Stockton/Washington  
Date: Tue 6/5/18

Task Split Milestone Summary

Inactive Milestone Inactive Summary Manual Task Duration-only

Manual Summary Rollup Manual Summary Start-only Finish-only

Deadline Progress Manual Progress

**Exhibit 10-H1 Cost Proposal**  
**Actual Cost-Plus-Fixed Fee or Lump Sum (Firm Fixed Price) Contracts**  
(Design, Engineering and Environmental Studies)

Note: Mark-ups are Not Allowed

Prime Consultant     Subconsultant     2nd Tier Subconsultant

Consultant Kimley-Horn and Associates, Inc.

Project No. \_\_\_\_\_ Contract No. \_\_\_\_\_ Date 6/7/2018

**DIRECT LABOR**

Classification/Title	Name	Hours	Actual Hourly Rate	Total
Project Manager	John Pulliam	136	\$76.94	\$ 10,463.84
Sr. Professional II	Frederk Venter	20	\$89.42	\$ 1,788.40
Sr. Professional II	Kevin Aguiqui	4	\$87.50	\$ 350.00
Sr. Professional II	Jack Boda	5	\$93.76	\$ 468.80
Sr. Professional I	Sanjay Pandya	9	\$79.34	\$ 714.06
Sr. Professional II	Mike Hollingsworth	30	\$85.00	\$ 2,550.00
Professional II	Kwasi Akwabi	44	\$62.02	\$ 2,728.88
Professional I	Michael Madsen	21	\$56.74	\$ 1,191.54
Professional I	Prasanna Muthireddy	10	\$55.78	\$ 557.80
Professional I	Daniel Carley	243	\$53.86	\$ 13,087.98
Professional I	Matt Wages	116	\$51.46	\$ 5,969.36
Professional I	Randall Kopff	61	\$50.96	\$ 3,108.56
Professional I	Tyler Whaley	95	\$55.30	\$ 5,253.50
Professional	Sean Hays	105	\$41.12	\$ 4,317.60
Professional	Scott Shepahd	20	\$41.12	\$ 822.40
Professional	Joe Cogswell	109	\$37.28	\$ 4,063.52
Analyst	Akash Patel	229	\$32.94	\$ 7,543.26
Project Support	Kao Saeurn	25	\$40.40	\$ 1,010.00
Project Support	Sharon Kamdar	20	\$54.82	\$ 1,096.40
Admin Support	Jeanne Schulz	29	\$24.04	\$ 697.16

**LABOR COSTS**

a) Subtotal Direct Labor Costs \$ 67,783.06  
 b) Anticipated Salary I 12 \$ 2,033.49  
 c) **TOTAL DIRECT LABOR COSTS [(a) + (b)] \$ 69,816.55**

**INDIRECT COSTS**

d) Fringe Benefits (Rate: 42.14%) e) Total Fringe Benefits [(c) x (d)] \$ 29,420.69  
 f) FCCM (Rate: 0.51%) g) Overhead [(c) x (f)] \$ 356.06  
 h) General and Administrative (Rate: 154.88%) i) Gen & Admin [(c) x (h)] \$ 108,131.88

5

j) **TOTAL INDIRECT COSTS [(e) + (g) + (i)] \$ 137,908.63**  
 k) **TOTAL FIXED FEE [(c) + (e) + (i)\* fixed fee 10% ] \$ 20,736.91**

**FIXED FEE**

**l) CONSULTANT'S OTHER DIRECT COSTS (ODC) - ITEMIZE (Add additional pages if necessary)**

Description of Item	Quantity	Unit	Unit Cost	Total
Travel (Mileage, Flights, etc.)			\$0.00	\$ 3,250.00
Reproduction			\$0.00	\$ 3,660.70
Traffic Counts (Quality Counts)			\$0.00	\$ 1,500.00

**l) TOTAL OTHER DIRECT COSTS \$ 8,410.70**

**m) SUBCONSULTANTS' COSTS (Add additional pages if necessary)**

Subconsultant 1: California Construction Surveys (DBE) \$ 13,789.30  
 Subconsultant 2: WRECO (DBE) \$ 19,177.28  
 Subconsultant 3: \_\_\_\_\_ \$  
 Subconsultant 4: \_\_\_\_\_ \$

**(m) TOTAL SUBCONSULTANTS' COSTS \$ 32,966.58**

**(n) TOTAL OTHER DIRECT COSTS INCLUDING SUBCONSULTANTS [(l) + (m)] \$ 41,377.28**  
**TOTAL COST [(c) + (j) + (k) + (n)] \$ 269,839.38**

**Exhibit 10-H Cost Proposal**  
**Actual Cost-Plus-Fixed Fee or Lump Sum (Firm Fixed Price) contracts**  
(Calculations for Anticipated Salary Increases)

Consultant Kimley-Horn and Associates, Inc. Contract No. \_\_\_\_\_ Date 6/7/2018

**1. Calculate average hourly rate for 1st Period of the contract (Direct Labor Subtotal divided by total hours)**

Direct Labor	Total Hours		Avg Hourly	Contract Duration
<u>Subtotal</u> per	per Cost		Rate	
Cost Proposal	Proposal	=		
\$ 67,783.06	/ 1331	=	\$50.93	Period 1 Avg Hourly Rate

**2. Calculate hourly rate for all periods (Increase the Average hourly rate for a period by proposed escalation %)**

	Avg Hourly Rate		Proposed Escalation		
Period 1	\$50.93	+	5%	=	\$53.47 Period 2 Avg Hourly Rate
Period 2	\$53.47	+	5%	=	\$56.15 Period 3 Avg Hourly Rate
Period 3	\$56.15	+	5%	=	\$58.95 Period 4 Avg Hourly Rate
Period 4	\$58.95	+	5%	=	\$61.90 Period 5 Avg Hourly Rate

**3. Calculate estimated hours per year (Multiply estimate % each period by total hours)**

	Estimated % Completed Each Period		Total Hours per Cost Proposal		Total Hours per Period	
Period 1	40.00%	*	1331	=	532.4	Estimated Hours Period 1
Period 2	60.00%	*	1331	=	798.6	Estimated Hours Period 2
Period 3	0.00%	*	1331	=	0	Estimated Hours Period 3
Period 4	0.00%	*	1331	=	0	Estimated Hours Period 4
Period 5	0.00%	*	1331	=	0	Estimated Hours Period 5
Total	100%		Total	=	1331	

**4. Calculate Total Costs including Escalation (multiply average hourly rate by the number of hours)**

	Avg Hourly Rate (calculated above)		Estimated Hours (calculated above)		Cost Per Period	
Period 1	\$50.93	*	532.4	=	\$27,113.22	Estimated Hours Period 1
Period 2	\$53.47	*	798.6	=	\$42,703.33	Estimated Hours Period 2
Period 3	\$56.15	*	0	=	\$0.00	Estimated Hours Period 3
Period 4	\$58.95	*	0	=	\$0.00	Estimated Hours Period 4
Period 5	\$61.90	*	0	=	\$0.00	Estimated Hours Period 5

Total Direct Labor Cost with Escalation = \$69,816.55  
 Direct Labor Subtotal before escalation = \$67,783.06  
 Estimated total of Direct Labor Salary Increase = \$2,033.49      Transfer to Page 1

Period 1 = Contract inception through 6/30/18      Period 2 = 7/1/18 through 6/30/19      Period 3 = 7/1/19 through 6/30/20  
 Period 4 = 7/1/20 through 6/30/21      Period 5 = 7/1/21 through 6/30/22

Exhibit 10-H1 Cost Proposal

Certification of Direct Costs:

I, the undersigned, certify to the best of my knowledge and belief that all direct costs identified on the cost proposal(s) in this contract are actual, reasonable, and allocable to the contract in accordance with the contract terms and the following requirements:


1. Generally Accepted Accounting Principles (GAAP)
2. Terms and conditions of the contract
3. Title 23 United States Code Section 112 - Letting of Contracts
4. 48 Code of Federal Regulations Part 31 - Contract Cost Principles and Procedures
5. 23 Code of Federal Regulations Part 172 - Procurement, Management, and Administration of Engineering and Design Related Service
6. 48 Code of Federal Regulations Part 9904 - Cost Accounting Standards Board (when applicable)

All costs must be applied consistently and fairly to all contracts. All documentation of compliance must be retained in the project files and be in compliance with applicable federal and state requirements. Costs that are noncompliant with the federal and state requirements are not eligible for reimbursement.

Local governments are responsible for applying only cognizant agency approved or Caltrans accepted Indirect Cost Rate(s).

Prime Consultant or Subconsultant Certifying:

Name: Anthony Podegracz Title\*: Vice President

Signature:  Date of Certification (mm/dd/yyyy): 6/7/2018

Email: anthony.podegracz@kimley-horn.com Phone Number: 925-398-4840

Address: 4637 Chabot Dr., Ste. 300, Pleasanton, CA 94588

\*An individual executive or financial officer of the consultant's or subconsultant's organization at a level no lower than a Vice President or a Chief Financial Officer, or equivalent, who has authority to represent the financial information utilized to establish the cost proposal for the contract.

List services the consultant is providing under the proposed contract:

Enginneering Design Services
------------------------------